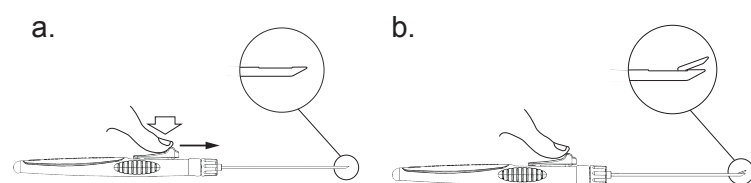
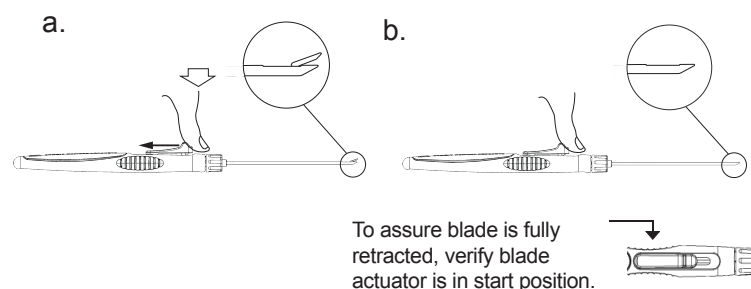


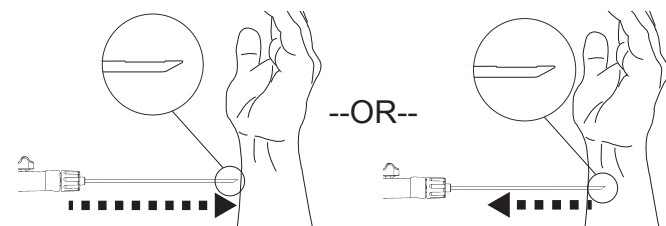
1. To extend blade, depress blade actuator and push forward towards metal tip of device:



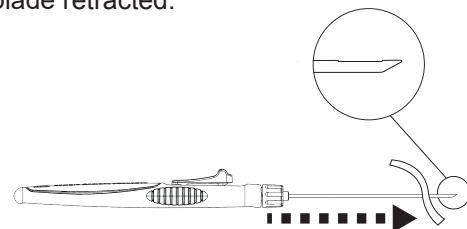
2. To retract blade, depress blade actuator and push away from tip of device.



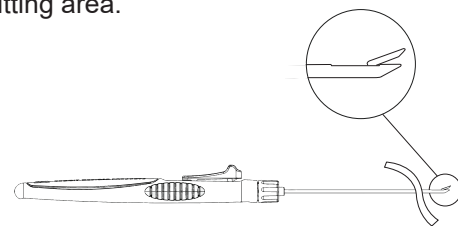
3. To insert or remove device, ensure blade is completely retracted:



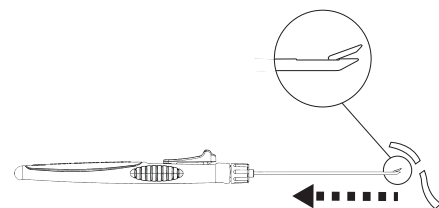
4. To cut tissue:  
a. Place device under and past the cutting area with blade retracted.



b. Extend the blade once device is under and past cutting area.



c. Cut tissue by moving device backwards.



5. To make multiple cuts, repeat Step 4.  
CAUTION: Retract blade when moving device forward.

# MICROi<sup>TM</sup>

MICRO-INVASIVE SURGICAL INSTRUMENTS



衛部醫器輸壹字第 020346 號

台灣總代理 茂信股份有限公司  
台北市大安區仁愛路三段29號七樓之二  
TEL : 02-2771-0569 FAX : 02-2777-1414  
[www.mutualong.com.tw](http://www.mutualong.com.tw)



MICROi BLADE™ is a division of  
Summit Medical Products, Inc.

For more information please  
visit [www.ambitpump.com](http://www.ambitpump.com)

Summit Medical Products, Inc. 504 West 8360 South, Sandy, UT 84070 United States

Ensure your surgical team's success  
with the MICROi<sup>®</sup> BLADE



*Surgery may be inevitable, but a scar can be avoided with the single-use MICROi BLADE tool*

The **MICROi BLADE** is an ergonomically intuitive surgical tool that allows physicians to perform minimally invasive surgery through a small incision along with ultrasound imaging. This instrument can move gently and smoothly through a 3 mm cut, although the incision may vary according to the procedure.

The small surgical cut accomplished with this handheld cutting tool significantly reduces scars and helps patients resume their daily activities faster. Unlike traditional surgery, with the **MICROi BLADE** patients may only need a band-aid or adhesive to cover the incision after the procedure.



Allows for quicker recovery and faster return to full activity



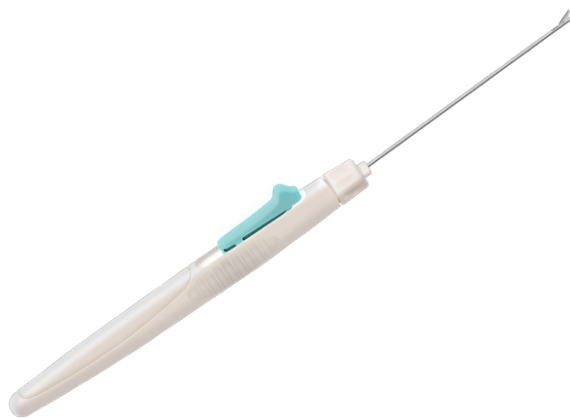
Significantly reduces post-operative pain



Helps surgeons reach small areas without cutting extra tissue.



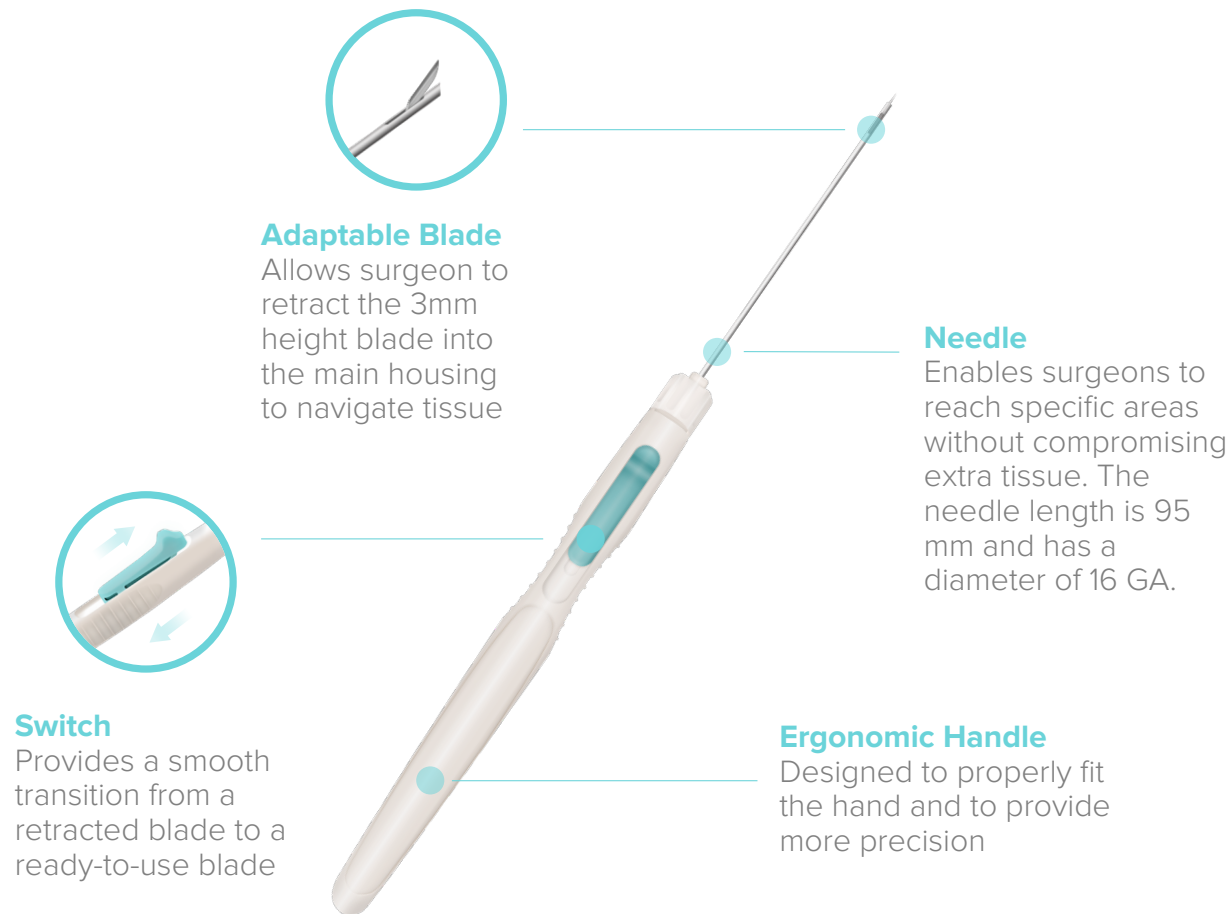
Decreases infection risk with smaller surgical area



The retractable blade of the **MICROi BLADE** allows its use in different surgical procedures where medical instruments with high precision are required, such as:

- Arm Fasciotomy
- Carpal Tunnel
- Trigger Finger
- Leg Fasciotomy
- Plantar Fasciitis
- Tarsal Tunnel

**MICROi BLADE** is a reliable tool, less expensive than most endoscopies and open procedures.



**THE SCARS** left behind traditional procedures have an emotional impact and can:

- Be aesthetically distressing
- Cause itching, tenderness, and pain
- Lower self-confidence

**MICROi BLADE - SHARP**

The sharp needle has a beveled tip of 45 degrees, used to pierce tissue through a small hole.

Product No.: 220497A

**MICROi BLADE - BLUNT**

The blunt needle is used to navigate through tissue without cutting.

Product No.: 220497B